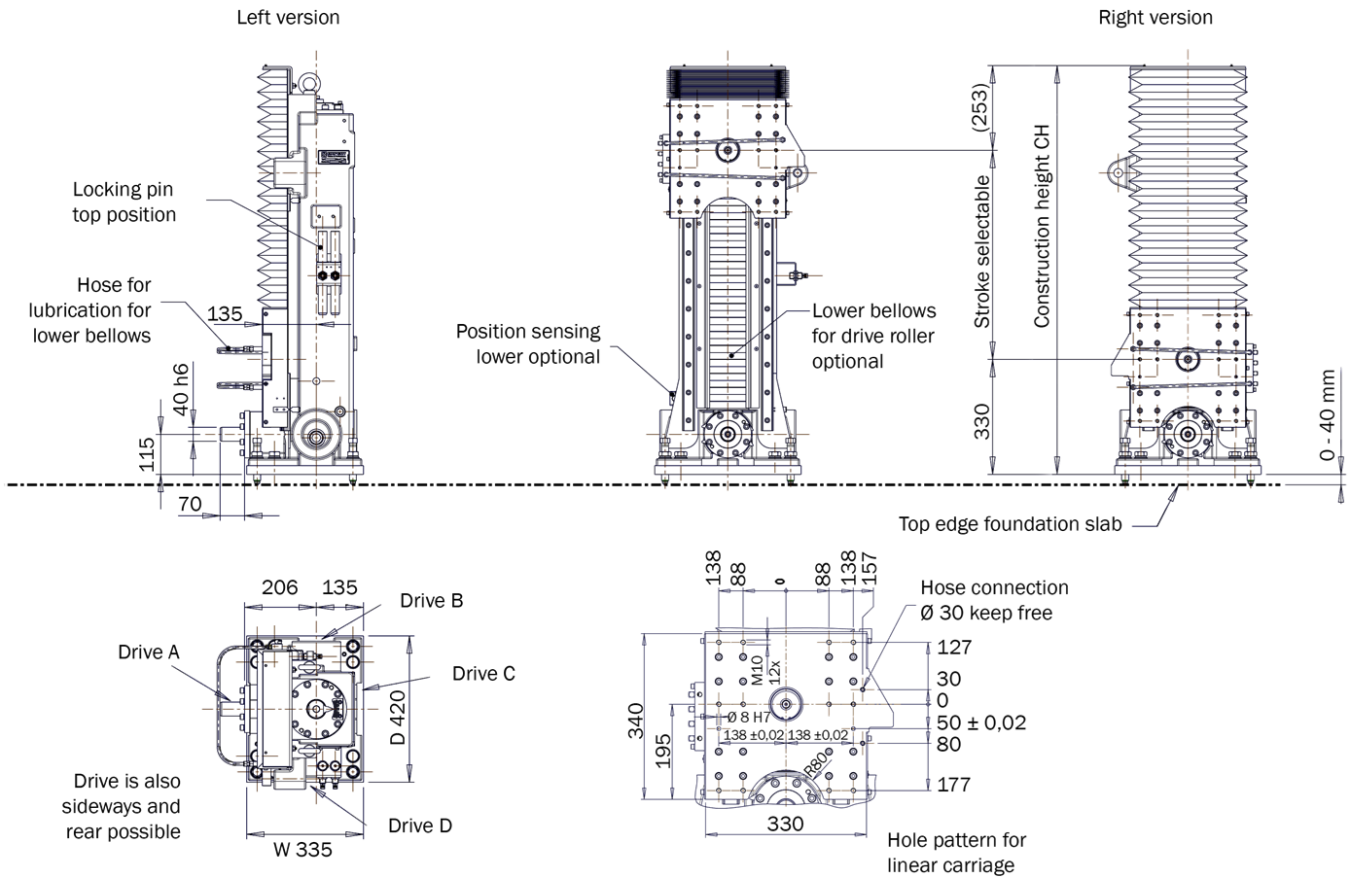


# Data Sheet – Lift Table – EH12G - Type 1

Vertical linear axis for loads up to 1075 kg total weight per unit.



## Key data of the EH12G:

Stroke (mm)	<b>600</b>	<b>800</b>	<b>1000</b>	<b>1200</b>
Height BH (mm)	1183	1383	1583	1783
Dimensions W x D (mm)	335x420			
net weight (kg)	300	340	390	452
Installation position drive <i>cardan or motor</i>	A, B, C and D possible see picture 1			
Lift times (s)	see diagram 1			
Offset loads x distance	see diagram 2 see picture 2			

## Further Sizes of EXPERT-lift series:

type / class	nominal Payload (kg)	maximum Stroke (mm)
EH12 – Typ 1	1075	1200
EH18 – Typ 2	2000	1800
EH23 – Typ 3	2520	2900

## Default:

### Colours:

- fixed parts: 7035 RAL
- moving parts: 2003 RAL

### EXPERT gearbox:

- Oil CLP 460 SF
- 4 liters

Bellows for the down position

### Drive:

Cardan shaft or direct flange connection SEW servo geared motors with smooth shaft possible (see Picture 1)  
Automatic lubricators for the index cam

### Technical specifications:

- $v_{max} = 0.5 \text{ m/s}$
  - $a_{max} = 1.7 \text{ m/s}^2$
- | depending on the load case  
| with standard configuration SEW motor with 15 kW
- Accuracy =  $\pm 0.5 \text{ mm}$
  - Repeatability =  $0.1 \text{ mm}$
- | without control, purely mechanical

# Data Sheet – Lift Table – EH12G - Type 1

Vertical linear axis for loads up to 1075 kg total weight per unit.

Diagram 1 - Lift Time\* / Stroke

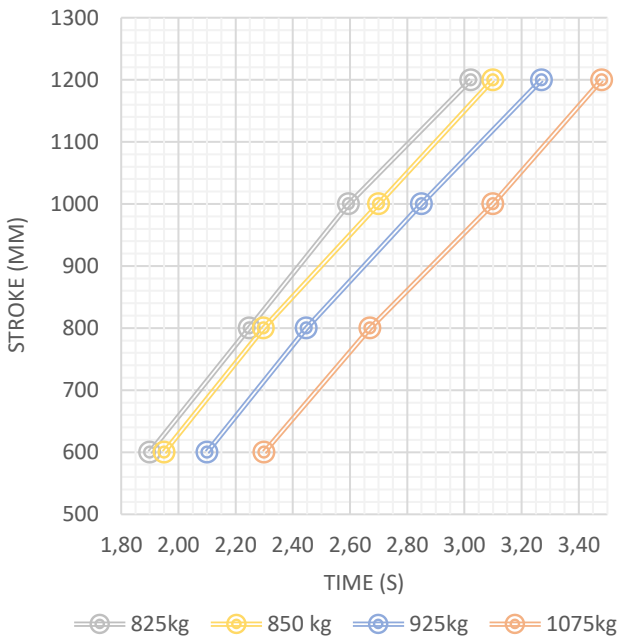
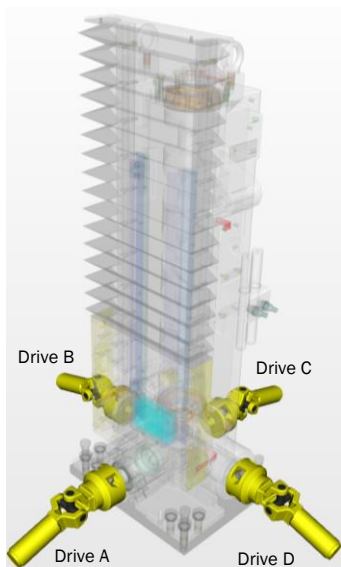
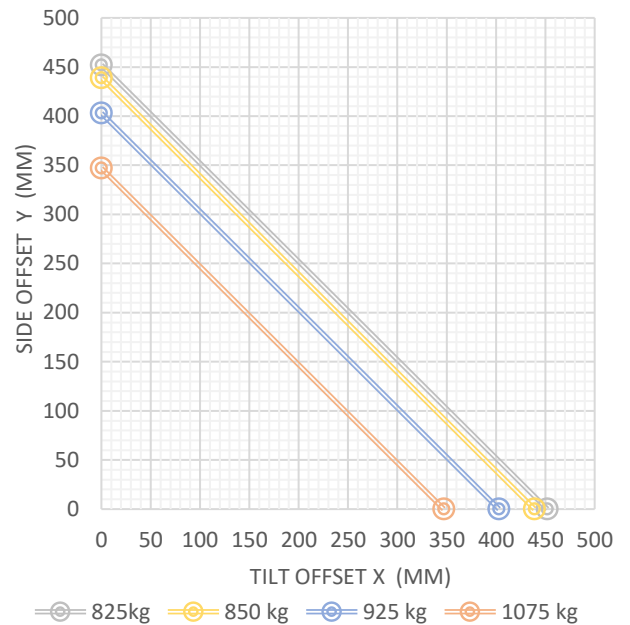
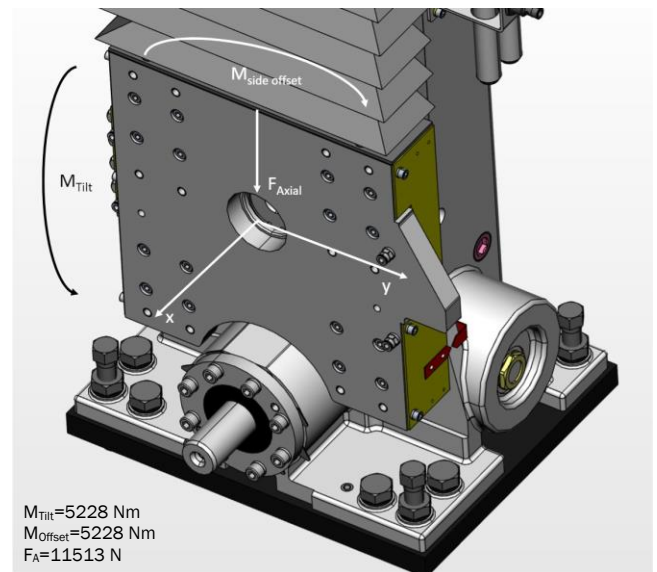


Diagram 2 - Tilt and Side Offsets



Picture 1 – Connection possibilities (one of)



Picture 2 – Forces and Torques

$M_{Tilt}=5228 \text{ Nm}$   
 $M_{Offset}=5228 \text{ Nm}$   
 $F_A=11513 \text{ N}$

## accessories:

- Sensors and Initiators for multiple positions
- Standard Drive SEW  
| optional other manufacturers  
| Motor adaptations/couplings
- Bellows for the upper position
- energy chain
- Automatic slide lubrication
- Automatic PLC controlled lubrication systems
- Maintenance Locks manual or pneumatic

## Product Details:

[www.expert-tuenkers.de > Products > Transport technology](http://www.expert-tuenkers.de > Products > Transport technology)

Contact person

[www.expert-tuenkers.de > Sales](http://www.expert-tuenkers.de > Sales)

For more information and project inquiries, contact us at [sales@expert-tuenkers.de](mailto:sales@expert-tuenkers.de)

\*Stroke times were determined for standard configurations.  
Deviations possible.